

SURFACING SUMMARY																	
LINE	STATION		AREA	BASE COURSES									HOT MIX ASPHALT	Remarks			
				GRANULAR BORROW			UNTREATED BASE COURSE 3/4" OR 1" MAX			LIQUID ASPHALT MC-70 OR MC-250 0.2 GAL/YD ²					HMA - 1/2" (PG 58-28)		
				(135 LB/FT ³)			(135 LB/FT ³)			(249 GAL/TON)					(155 LB/FT ³)		
FROM	TO	SQ YD	DEPTH	VOL	VOL	DEPTH	VOL	VOL	TON	DEPTH	VOL	TON					
			IN	FT ³	CY	IN	FT ³	CY		IN	FT ³						
1400 NORTH	24+37.62	24+46.14	31	16	370	14	12	277.69	10	0.0	6	138.85	11	Pavement Replacement			
1400 NORTH	24+60.00	32+28.00	3,020	16	36242	1342	12	27181	1007	2.4	5	11325	878	Pavement Widening			
1400 NORTH	26+37.37	32+28.00	1,323	16	15875	588	12	11906	441	1.1	5	4961	384	Pavement Widening			
1400 NORTH	31+03.75	37+19.37	359	0	0	0	0	0	0	0.3	5	1344.9	104	Pavement Replacement (BTC Sewer)			
1400 NORTH	31+82.30	38+31.30	657	0	0	0	4	1969.6	73	0.5	4	1969.6	153	Pavement Widening (BTC Parking Lot)			
1400 NORTH	32+28.00	40+90.00	9,233	16	110795	4104	12	83096	3078	7.4	5	34623	2,683	Full Depth Pavement Reclamation			
1400 NORTH	41+00.00	43+00.00	1,429	16	17145	635	12	12859	476	1.1	5	5357.7	415	Full Depth Pavement Reclamation			
1400 NORTH	43+00.00	45+59.44	223	16	2690	99	12	2010	74	0.2	5	837.62	65	Pavement Widening			
1400 NORTH	43+00.00	44+62.52	276	16	3312	123	12	2483.9	92	0.2	5	1035	80	Pavement Widening			
1400 NORTH	40+83.32	40+87.22	2	16	26	1	12	19.53	1	0.0	0	0	0	South Ped Crossing			
1400 NORTH	40+85.67	40+90.02	2	16	29	1	12	21.89	1	0.0	0	0	0	North Ped Crossing			
1400 NORTH	40+97.23	41+01.18	2	16	26	1	12	19.75	1	0.0	0	0	0	South Ped Crossing			
1400 NORTH	41+00.02	41+10.01	6	16	67	2	12	50.03	2	0.0	0	0	0	North Ped Crossing			
600 WEST	66+89.86	70+32.67	217	12	1955	72	10	1629	60	0.2	4	651.61	50	Pavement Widening			
600 WEST	66+89.86	81+28.50	920	12	8278	307	10	6898	255	0.7	4	2759.2	214	Pavement Widening			
600 WEST	71+78.20	72+93.92	39	12	351	13	11	322.1	12	0.0	5	146.41	11	Pavement Replacement			
600 WEST	73+17.12	73+22.17	3	12	29	1	12	29.48	1	0.0	6	14.74	1	Pavement Replacement			
600 WEST	73+39.32	73+45.17	4	12	37	1	13	40.495	1	0.0	7	21.805	2	Pavement Replacement			
600 WEST	73+66.62	74+16.62	17	12	150	6	14	175	6	0.0	8	100	8	Pavement Replacement			
600 WEST	75+77.69	76+97.21	40	12	359	13	15	448.19	17	0.0	9	268.91	21	Pavement Replacement			
600 WEST	77+88.36	77+94.90	4	12	40	1	16	53.267	2	0.0	10	33.292	3	Pavement Replacement			
600 WEST	78+11.58	78+17.85	5	12	42	2	17	58.848	2	0.0	11	38.078	3	Pavement Replacement			
600 WEST	80+56.32	80+80.05	24	12	213	8	16	320	12	0.0	12	213.33	17	Pavement Replacement			
600 WEST	80+88.52	81+27.00	17	12	153	6	19	241.57	9	0.0	13	165.28	13	Pavement Replacement			
600 WEST	85+35.00	90+48.00	1,541	12	13871	514	10	11559	428	1.2	4	4623.7	358	Pavement Widening			
600 WEST	88+52.22	88+72.74	6	33	138	5	31	129.43	5	0.0	25	104.38	8	Pavement Replacement			
TOTAL			19,399		7,859		6,067		16			5,482					

FENCE SUMMARY SHEET								
LINE	FROM		TO		42" WHITE VINYL FENCE	72" WHITE VINYL FENCE	42" CHAIN LINK FENCE	REMARKS
	STATION	OFFSET	STATION	OFFSET				
	FEET	FEET	FEET	FEET				
1400 North	41+25.34	52.69 RT	42+11.62	46.27 RT	86.52			
1400 North	42+11.62	46.27 RT	44+09.46	46.27 RT		197.84		
1400 North	40+69.70	46.88 RT	40+71.83	52.21 RT			5.74	
1400 North	40+71.83	52.21 RT	40+81.26	52.47 RT			9.43	
1400 North	40+72.05	39.29 RT	40+75.25	47.30 RT			8.63	
1400 North	40+75.25	47.30 RT	40+81.38	47.48 RT			6.13	
1400 North	40+78.36	44.31 LT	40+78.51	49.31 LT			5.00	
1400 North	40+78.51	49.31 LT	40+83.46	49.98 LT			5.00	
1400 North	40+83.66	38.57 LT	40+83.90	45.00 LT			6.43	
1400 North	41+03.24	48.00 RT	41+03.37	43.00 RT			5.00	
1400 North	41+03.37	43.00 RT	41+13.37	43.26 RT			10.00	
1400 North	41+08.11	53.12 RT	41+08.24	48.13 RT			4.99	
1400 North	41+13.37	43.26 RT	41+13.24	48.26 RT			5.00	
1400 North	41+26.46	35.70 LT	41+26.98	43.51 LT			7.83	
1400 North	41+27.32	48.50 LT	41+32.30	48.16 LT			4.99	
1400 North	41+32.30	48.16 LT	41+31.85	41.35 LT			6.82	
TOTAL					87	198	91	

EARTHWORK SUMMARY SHEET						
LINE	STATION		LENGTH	ROADWAY EXCAVATION	BORROW	REMARKS
	FROM	TO				
1400 N	24+37.43	45+59.44	2122.01	17600	9197	
TOTAL				17,600	9,197	

SURFACING SUMMARY - CURB AND GUTTER										
LINE	STATION		LENGTH	CURB TYPE	WIDTH	UNTREATED BASE COURSE 3/4" OR 1" MAX			Remarks	
	FROM	TO				DEPTH	VOL	VOL		
						IN	FT ³	CY		
1400 NORTH	24+37.83	18.21 LT	24+46.33	18.24 LT	9	TYPE A	3	8	18	1
1400 NORTH	25+42.99	56.50 RT	25+60.59	57.50 RT	18	TYPE A	3	8	37	1
1400 NORTH	25+60.27	18.52 LT	25+64.79	18.53 LT	5	TYPE A	3	8	10	0
1400 NORTH	25+68.06	62.11 RT	25+77.00	72.50 RT	14	TYPE A	3	8	29	1
1400 NORTH	25+79.87	32.56 LT	25+79.91	43.32 LT	11	TYPE A	3	8	23	1
1400 NORTH	26+19.10	81.44 RT	26+28.93	61.63 RT	22	TYPE A	3	8	47	2
1400 NORTH	26+32.91	18.61 LT	26+19.83	33.71 LT	20	TYPE A	3	8	42	2
1400 NORTH	38+97.64	38.51 LT	39+33.23	51.72 LT	38	TYPE A	3	8.0	80.1	3.0
1400 NORTH	39+03.46	38.50 LT	39+32.42	46.40 RT	30	TYPE A	3	8	63	2
1400 NORTH	40+38.76	65.23 RT	40+87.61	36.75 RT	59	TYPE A	3	8	125	5
1400 NORTH	40+49.63	47.88 LT	40+62.78	41.62 LT	15	TYPE A	3	8	31	1
1400 NORTH	40+78.54	38.91 LT	40+89.68	35.56 LT	12	TYPE A	3	8	25	1
1400 NORTH	40+97.61	36.74 RT	44+09.53	39.53 RT	312	TYPE A	3	8	659	24
1400 NORTH	40+99.73	37.47 LT	45+59.44	26.29 LT	460	TYPE A	3	8	971	36
1400 NORTH	44+15.78	45.01 RT	44+16.39	48.16 RT	3	TYPE A	3	8	7	0
600 WEST	66+89.86	25.68 LT	69+81.72	38.88 LT	292	TYPE A	3	8	617	23
600 WEST	69+83.20	47.88 LT	69+83.02	59.53 LT	12	TYPE A	3	8	25	1
600 WEST	70+23.02	39.00 LT	70+32.65	26.77 LT	246	TYPE A	3	8	519	19
600 WEST	73+66.61	27.67 LT	74+16.57	27.81 LT	212	TYPE A	3	8	448	17
600 WEST	75+80.64	28.36 LT	76+94.19	28.56 LT	155	TYPE A	3	8	327	12
600 WEST	80+88.38	29.70 LT	82+87.20	52.83 LT	251	TYPE A	3	8	530	20
600 WEST	84+05.17	36.81 RT	85+00.00	20.00 RT	96	TYPE A	3	8	203	8
600 WEST	84+10.80	54.67 LT	86+46.51	35.76 LT	236	TYPE A	3	8	499	18
600 WEST	86+82.62	34.00 LT	88+46.50	34.00 LT	164	TYPE A	3	8	346	13
600 WEST	88+49.79	46.11 LT	88+49.77	48.23 LT	2	TYPE A	3	8	4	0
600 WEST	88+74.75	48.87 LT	88+75.19	46.09 LT	3	TYPE A	3	8	6	0
600 WEST	88+80.32	34.00 LT	90+48.00	34.00 LT	168	TYPE A	3	8	354	13
1400 NORTH	31+82.30	52.92 RT	32+75.25	52.92 RT	93	TYPE G	3	8	165	6
1400 NORTH	33+27.25	52.92 RT	35+99.49	52.92 RT	272	TYPE G	3	8	484	18
1400 NORTH	36+49.78	52.92 RT	38+31.30	52.92 RT	182	TYPE G	3	8	323	12
1400 NORTH	40+60.43	3.23 RT	40+82.11	3.02 RT	22	TYPE Q	1	8	12	0
1400 NORTH	40+60.43	9.52 RT	40+82.11	9.52 RT	22	TYPE Q	1	8	12	0
1400 NORTH	40+82.11	3.02 RT	40+82.11	9.52 RT	7	TYPE Q	1	8	4	0
1400 NORTH	41+04.87	3.02 RT	42+03.62	3.02 RT	99	TYPE Q	1	8	55	2
1400 NORTH	41+04.87	3.02 RT	41+04.88	9.52 RT	7	TYPE Q	1	8	4	0
1400 NORTH	41+04.88	9.52 RT	42+03.62	9.52 RT	99	TYPE Q	1	8	55	2
1400 NORTH	28+87.60	38.50 RT	30+77.60	38.50 RT	190	TYPE E	3	8	317	12
600 WEST	71+78.20	27.08 LT	72+86.13	27.38 LT	123	TYPE E	3	8	205	8
1400 NORTH	26+32.91	18.16 LT	32+72.32	38.50 LT	640	MOD TYPE A	3	8	1066	39
1400 NORTH	26+36.94	57.53 RT	28+87.60	38.50 RT	251	MOD TYPE A	3	8	419	16
1400 NORTH	30+77.60	38.50 RT	39+03.46	38.50 RT	826	MOD TYPE A	3	8	1376	51
1400 NORTH	33+30.33	38.50 LT	36+16.77	38.50 LT	286	MOD TYPE A	3	8	477	18
1400 NORTH	36+52.77	38.50 LT	38+97.64	38.51 LT	245	MOD TYPE A	3	8	408	15
600 WEST	66+89.86	23.82 RT	68+45.10	23.36 RT	155	MOD TYPE A	3	8	259	10
600 WEST	68+78.26	23.26 RT	82+80.50	39.17 RT	1404	MOD TYPE A	3	8	2340	87
TOTAL									519	



SHEET NO: **SM-3**

REVISION BLOCK: 10/24/2019 ADDENDUM 2

DESIGNED: DAN DRAFTED: DAN CHECKED: JDU

AECOM

756 E Winchester St.
Suite 400
Salt Lake City,
UT 84107
801-904-4000

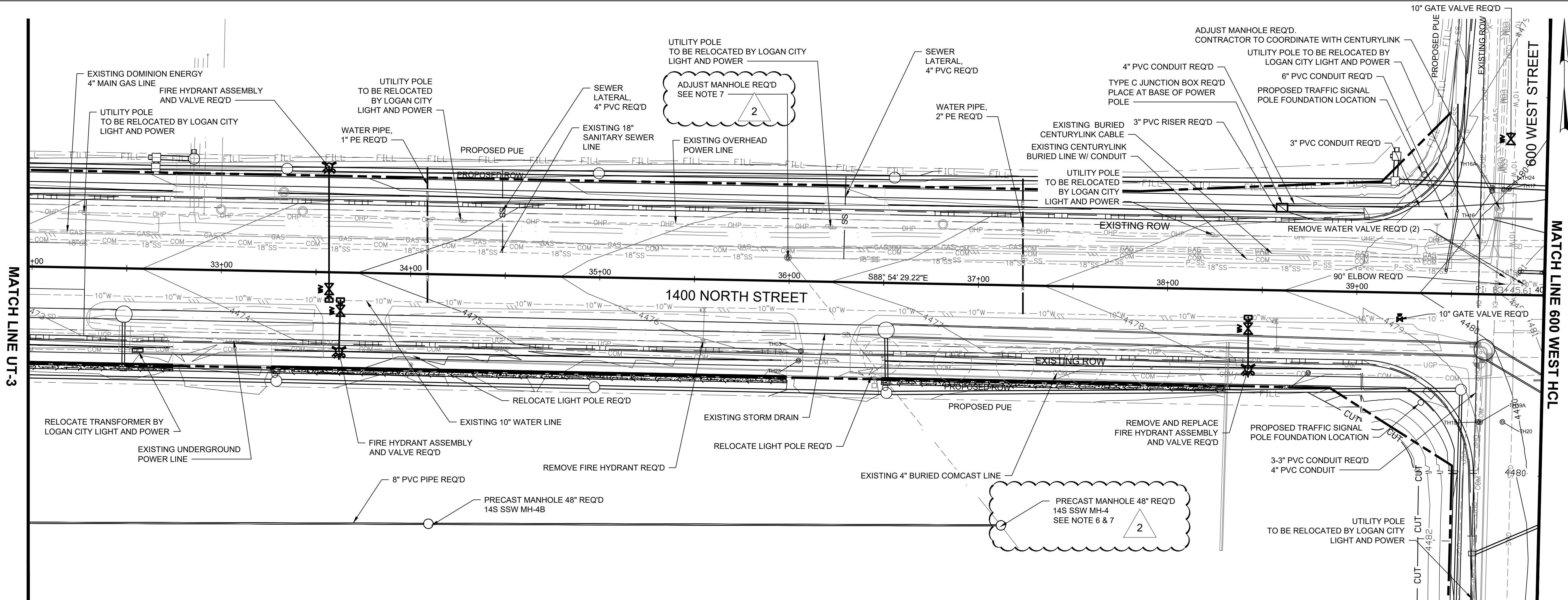
1400 NORTH AT 600 WEST
TRAFFIC SIGNAL PROJECT
SUMMARY SHEET

LOGAN CITY ENGINEERING
290 NORTH 100 WEST
LOGAN, UTAH 84321

LOGAN CITY ENGINEERING
PUBLIC WORKS DEPARTMENT

PRINT DATE/TIME: 10/24/2019 2:48 PM

PROJECT FILE LOCATION: Q:\Projects\Logan_City\6527866-1400 N 600 W Logan\600 - CAD_GIS\910-CAD\20-SHEET\UTILITIES\1400N600W_UT-4.dwg



RELOCATE LIGHT POLE REQ'D
 STA 34+01.02, RT 43.00
 (STA 34+01.02, RT 47.09)
 STA 36+45.96, RT 43.00
 (STA 36+45.96, RT 49.44)

10" GATE VALVE REQ'D
 STA 39+22.98, RT 14.01
 STA 39+79.86, LT 82.25

FIRE HYDRANT ASSEMBLY AND VALVE REQ'D
 STA 33+49.60, LT 41.00
 STA 33+62.85, RT 41.55

ADJUST MANHOLE REQ'D
 STA 35+99.13, LT 12.40
 STA 39+74.67, LT 45.23

90° ELBOW REQ'D
 STA 39+81.22, LT 5.62

REMOVE FIRE HYDRANT REQ'D
 STA 35+55.17, RT 34.36

REMOVE AND REPLACE FIRE HYDRANT ASSEMBLY AND VALVE REQ'D
 STA 38+43.30, RT 41.75
 (STA 38+58.26, RT 33.19)

SEWER LATERAL, 4" PVC REQ'D
 STA 34+48.40, RT 12.20 TO
 STA 34+47.55, LT 56.00
 STA 36+28.60, RT 12.30 TO
 STA 36+29.00, LT 56.00

PRECAST MANHOLE 48" REQ'D
 STA 34+11.86, RT 131.88
 STA 37+14.29, RT 126.94

PRECAST MANHOLE 60" REQ'D
 STA 31+08.83 136.83 RT

6" PVC CONDUITS REQ'D
 STA 38+59.65, LT 43.66 TO
 STA 41+80.38, LT 50.00

3" PVC RISER REQ'D
 STA 38+59.65, LT 43.66

REMOVE WATER VALVE REQ'D
 STA 39+78.42, LT 8.99
 STA 39+88.24, LT 5.68

3" PVC CONDUIT REQ'D
 STA 38+59.65, LT 43.66 TO
 STA 40+60.02, LT 70.26

3-3" PVC CONDUIT REQ'D
 STA 79+85.12, LT 34.64 TO
 STA 87+70.99, LT 32.80

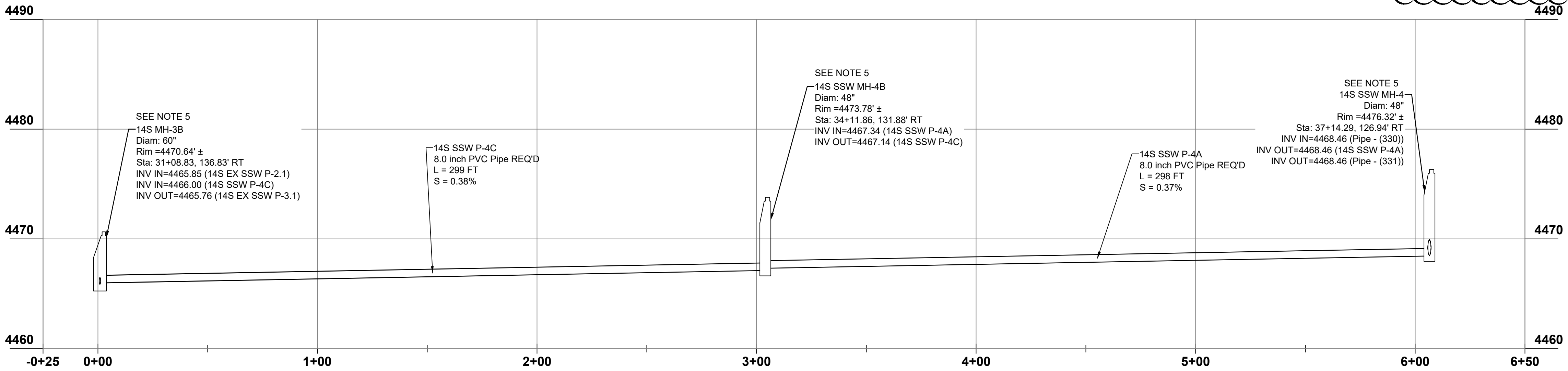
4" PVC CONDUIT REQ'D
 STA 38+59.65, LT 43.66 TO
 STA 39+45.07, LT 196.16
 STA 79+85.12, LT 34.64 TO
 STA 87+70.99, LT 32.80

TYPE C JUNCTION BOX REQ'D
 STA 38+59.65, LT 43.66

WATER PIPE, 1" PE REQ'D
 STA 34+09.20, RT 14.75 TO
 STA 34+07.85, LT 56.00

WATER PIPE, 2" PE REQ'D
 STA 37+23.85, RT 14.70 TO
 STA 37+22.50, LT 56.00

- NOTES:**
- CONTACT BLUE STAKES OF UTAH BEFORE DIGGING; 1-800-882-4111 OR 811. ALL EXISTING UTILITY LOCATIONS ARE SHOWN FOR REFERENCE ONLY. CONTRACTOR TO LOCATE BOTH HORIZONTAL AND VERTICAL UTILITY LOCATIONS IN THE FIELD.
 - STORM DRAIN SHOWN FOR INFORMATION ONLY. SEE DR SHEETS.
 - PROVIDE AT LEAST 48 HOUR NOTICE PRIOR TO ANY WATER OUTAGES BEING PERFORMED.
 - CONDUIT RUNS ARE SCHEMATIC AND MAY VARY DEPENDING ON INSTALLATION METHOD.
 - PARKING LOT AREA WAS NOT SURVEYED - CONTRACTOR TO SET MH RIM ELEVATION TO EXISTING GRADE.
 - EXISTING INVERT AT EXISTING CLEANOUT NOT SURVEYED - CONTRACTOR TO FIELD VERIFY.
 - ABANDON EXISTING SEWER AT MAIN. CAP AND FLOW FILL PIPE ABANDONMENT TO BE CONSIDERED INCIDENTAL TO PRECAST MANHOLE 48".



SHEET NO: **UT-4**

REVISION BLOCK: 10/24/2019 ADDENDUM #2

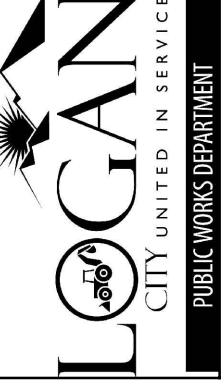
DESIGNED: DAN
 DRAFTED: JCL
 CHECKED: TCB



756 E Winchester St.
 Suite 400
 Salt Lake City,
 UT 84107
 801-904-4000

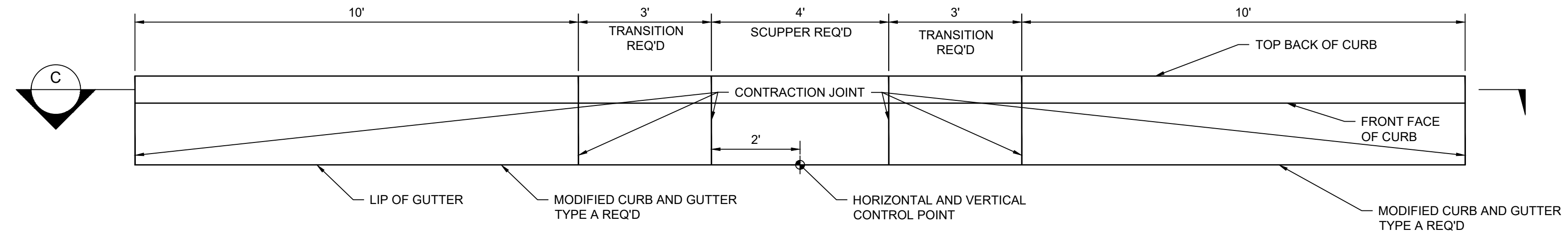
1400 NORTH AT 600 WEST
 TRAFFIC SIGNAL PROJECT
 UTILITY PLAN SHEET

LOGAN CITY ENGINEERING
 290 NORTH 100 WEST
 LOGAN, UTAH 84321



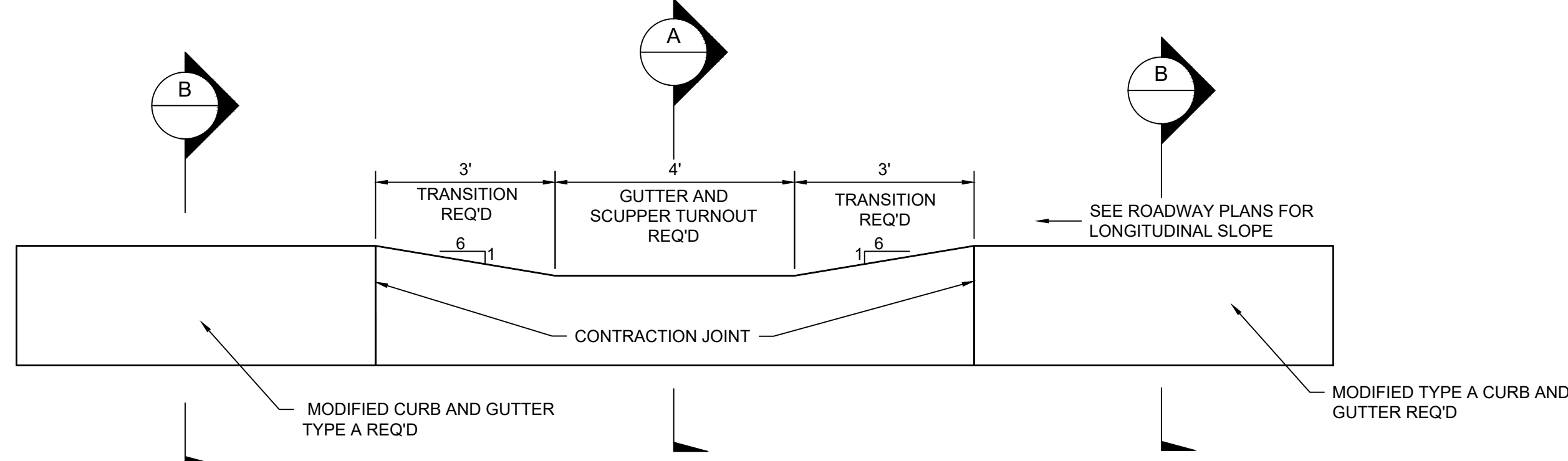
PRINT DATE/TIME: 10/24/2019 12:02 PM

PROJECT FILE LOCATION: C:\Projects\logon_City\6527898_1400 N 600 W Logon\900 - CAD_GIS\910-CAD\20-SHEETS\DRAINAGE\1400N-600W_DD.dwg



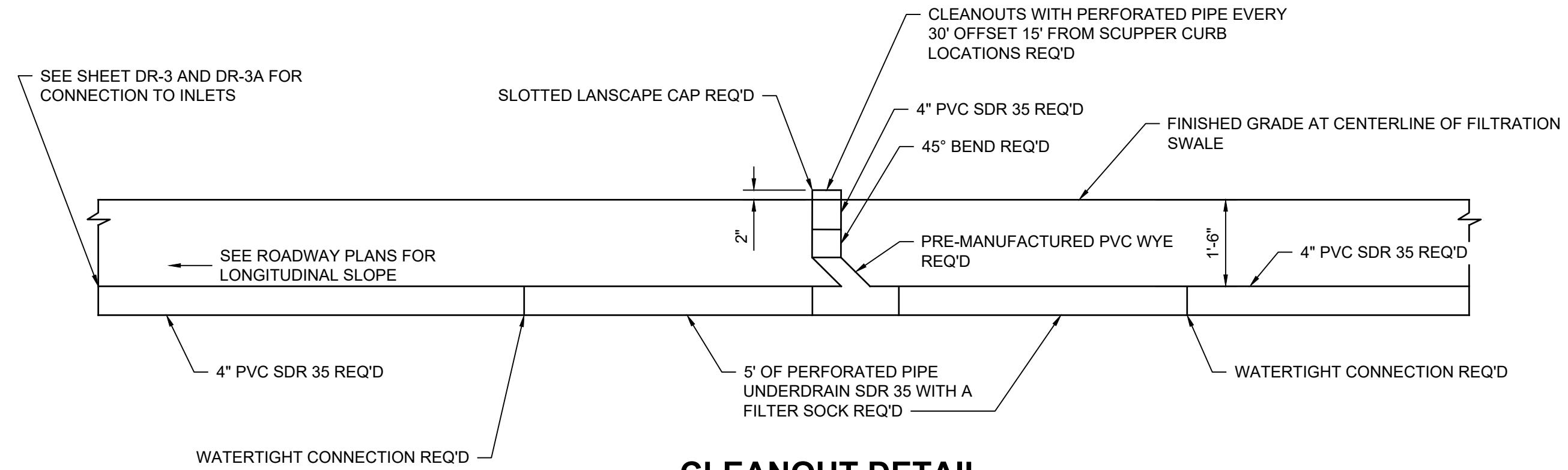
PLAN - TYPE A MODIFIED CURB WITH SCUPPER TURNOUT

STA: 26+43.00 TO 39+08.34
SCALE: 1" = 2'



SECTION C - PROFILE OF TYPE A MODIFIED CURB WITH SCUPPER TURNOUT

STA: 26+43.00 TO 39+08.34
SCALE: 1" = 2'



CLEANOUT DETAIL

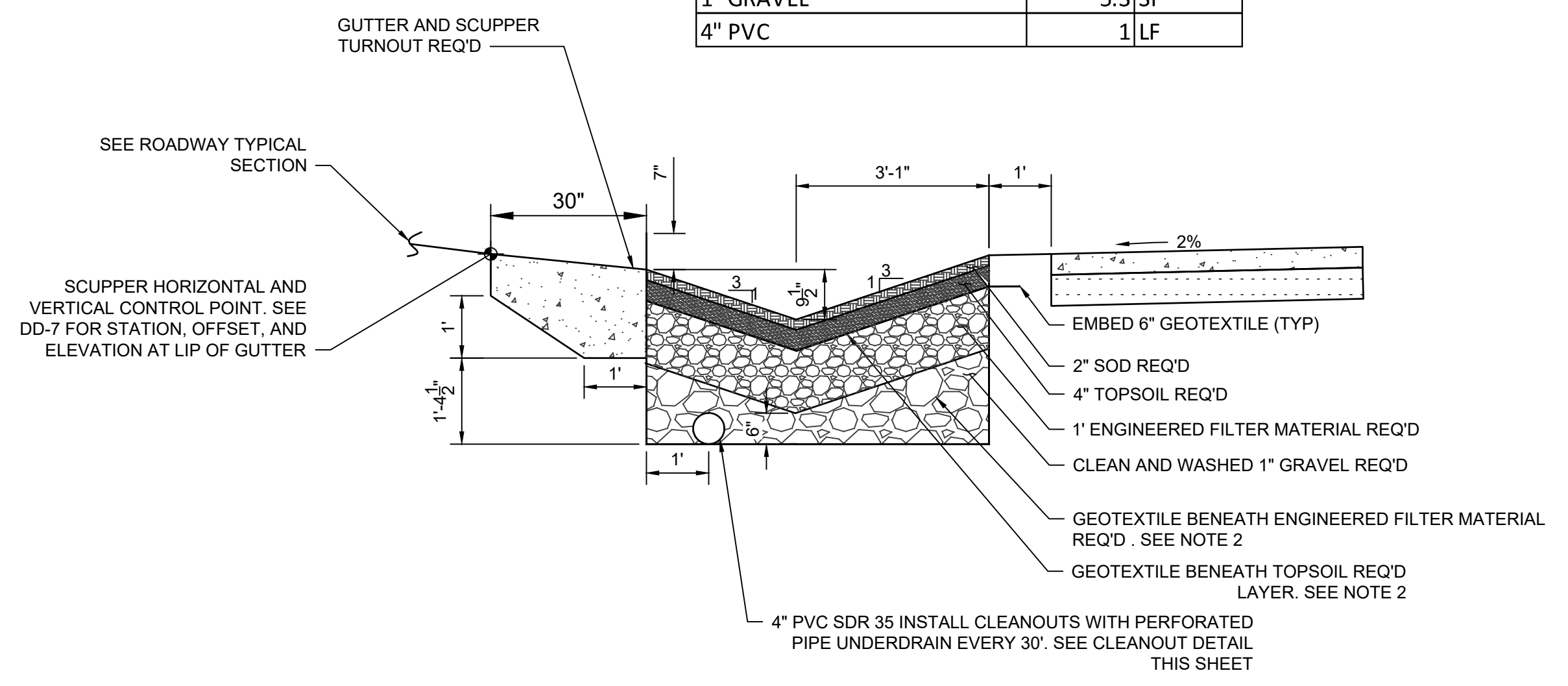
STA: 26+43.00 TO 39+08.34
SCALE: 1" = 2'

NOTES:

- ENGINEERED FILTER MATERIAL TO BE CONSIST OF 30% SANDS, 40% TOPSOIL, AND 30% COMPOST OR APPROVED VENDOR PROVIDED MEDIA.
- GEOTEXTILE TO BE CLASS 2 NONWOVEN DRAINAGE GEOTEXTILE ACCORDING TO AASHTO M 288.
- INSTALL APWA TYPE A CURB AND GUTTER, MODIFIED AS SHOWN.
- ITEMS DETAILED ON THIS SHEET, EXCLUDING SCUPPER CURB, TO INCLUDE ALL REQUIRED MATERIALS AND LABOR AND PAID FOR AS FILTRATION SWALE (DEVELOPED), LINEAL FEET. THE FOLLOWING ITEMS SHALL BE INCLUDED IN THE COST OF FILTRATION SWALE (DEVELOPED):
 - ITEMS IN TABLE 1, VOLUME PER LINEAL FEET.
 - ALL ITEMS INDICATED IN CLEANOUT DETAIL, INSTALL EVERY 30 FEET.
 - ADDITIONAL 24 FEET OF 4" PVC TO COMPLETE CONNECTIONS AS INDICATED ON CLEANOUT DETAIL.

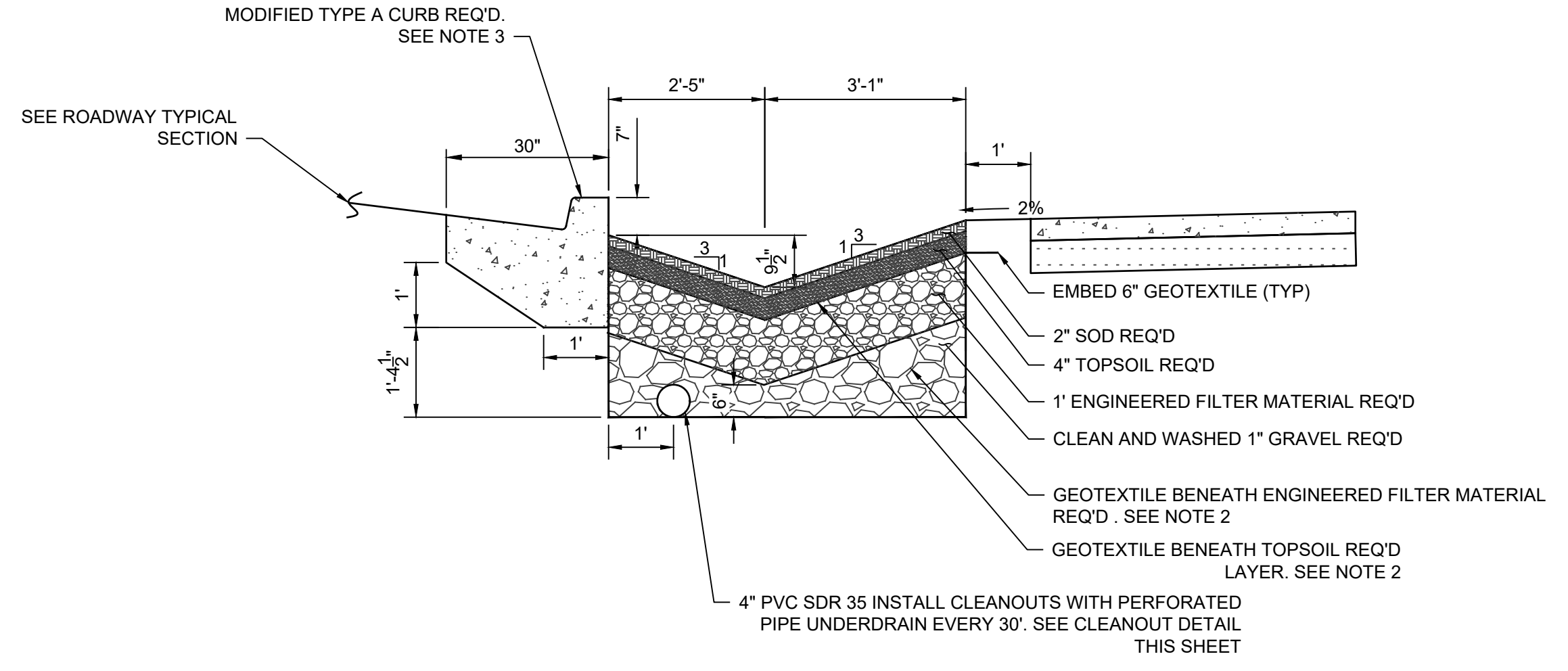
TABLE 1 - QUANTITIES PER LINEAR FOOT OF DEVELOPED FILTRATION SWALE

GEOTEXTILE	15.6 FT
SOD	0.92 SF
TOPSOIL	1.84 SF
ENGINEERED FILTER MATERIAL	5.52 SF
1" GRAVEL	5.3 SF
4" PVC	1 LF



SECTION A - TYPICAL SECTION FILTRATION SWALE AT SCUPPER TURNOUT (DEVELOPED)

SCALE: 1" = 2'



SECTION B - TYPICAL SECTION FILTRATION SWALE WITH MODIFIED TYPE A CURB (DEVELOPED)

SCALE: 1" = 2'



SHEET NO: **DD-1**

REVISION BLOCK:
10/24/2019 ADDENDUM 2

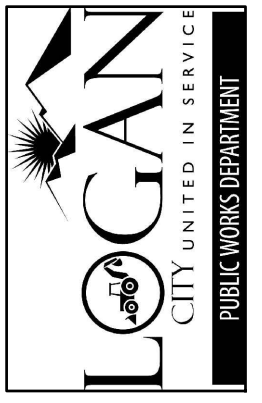
DESIGNED: CK
DRAFTED: LMR
CHECKED: CK



756 E Winchester St.
Suite 400
Salt Lake City,
UT 84107
801-904-4000

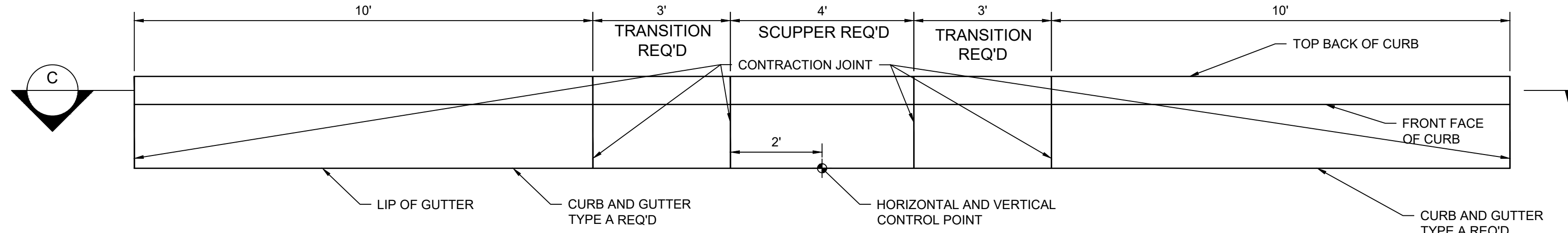
1400 NORTH AT 600 WEST
TRAFFIC SIGNAL PROJECT
DEVELOPED FILTRATION SWALE DETAIL
SHEET

LOGAN CITY ENGINEERING
290 NORTH 100 WEST
LOGAN, UTAH 84321



PRINT DATE/TIME: 10/24/2019 12:02 PM

PROJECT FILE LOCATION: Q:\Projects\logans\1400 N 600 W\Logans\90 - CAD_GIS\91\CAD\20-SHEETS\DRAINAGE\1400N-600W_DD.dwg



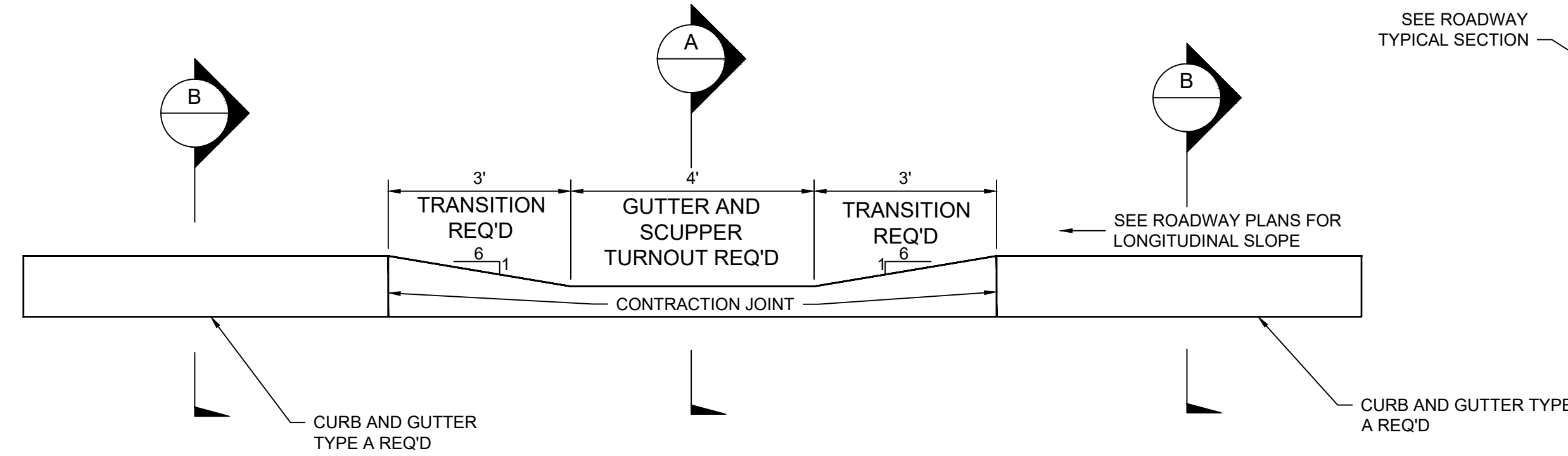
PLAN - TYPE A CURB WITH SCUPPER TURNOUT

STA: 66+94.15 TO 82+53.50
SCALE: 1" = 2'

NOTES:

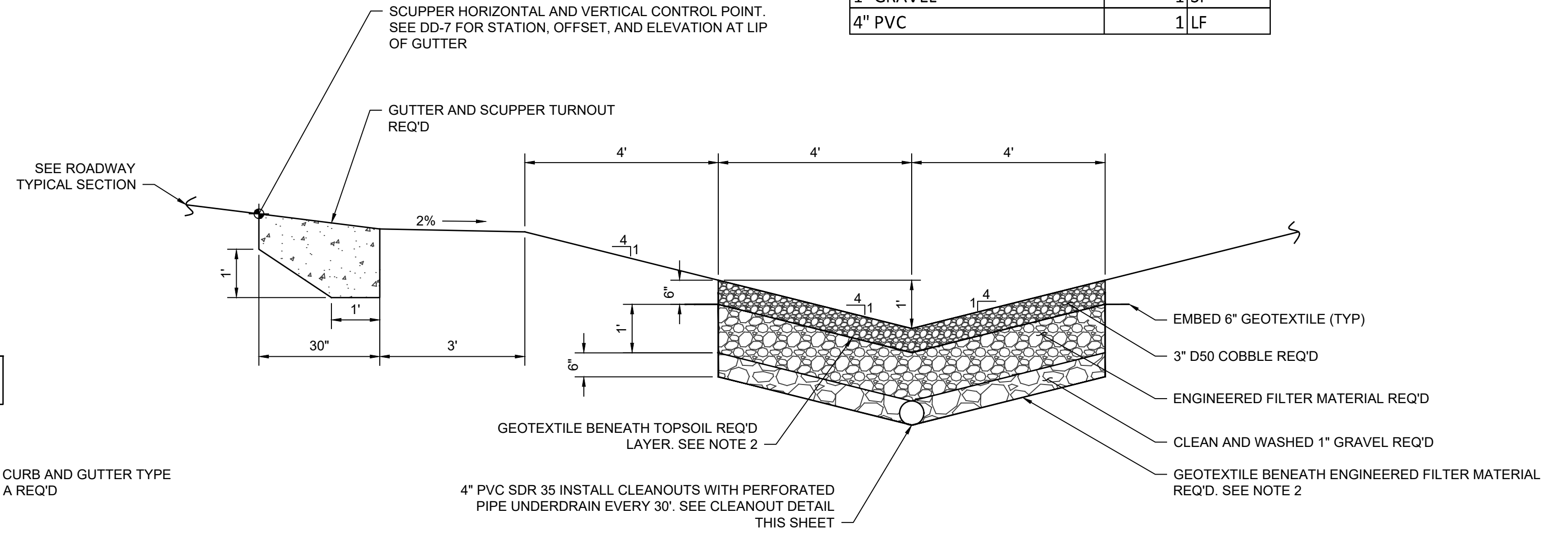
- ENGINEERED FILTER MATERIAL TO BE CONSIST OF 30% SANDS, 40% TOPSOIL, AND 30% COMPOST OR APPROVED VENDOR PROVIDED MEDIA.
- GEOTEXTILE TO BE CLASS 2 NONWOVEN DRAINAGE GEOTEXTILE ACCORDING TO AASHTO M 288.
- INSTALL APWA TYPE A CURB AND GUTTER, MODIFIED AS SHOWN.
- ITEMS DETAILED ON THIS SHEET, EXCLUDING SCUPPER CURB, TO INCLUDE ALL REQUIRED MATERIALS AND LABOR AND PAID FOR AS FILTRATION SWALE (UNDEVELOPED), LINEAL FEET. THE FOLLOWING ITEMS SHALL BE INCLUDED IN THE COST OF FILTRATION SWALE (UNDEVELOPED):
A. ITEMS IN TABLE 1, VOLUME PER LINEAL FOOT.
B. ALL ITEMS INDICATED IN CLEANOUT DETAIL, INSTALL EVERY 30 FEET.

ITEM	QUANTITY
GEOTEXTILE	20.65 FT
3" D50 COBBLE	4 SF
ENGINEERED FILTER MATERIAL	8 SF
1" GRAVEL	1 SF
4" PVC	1 LF



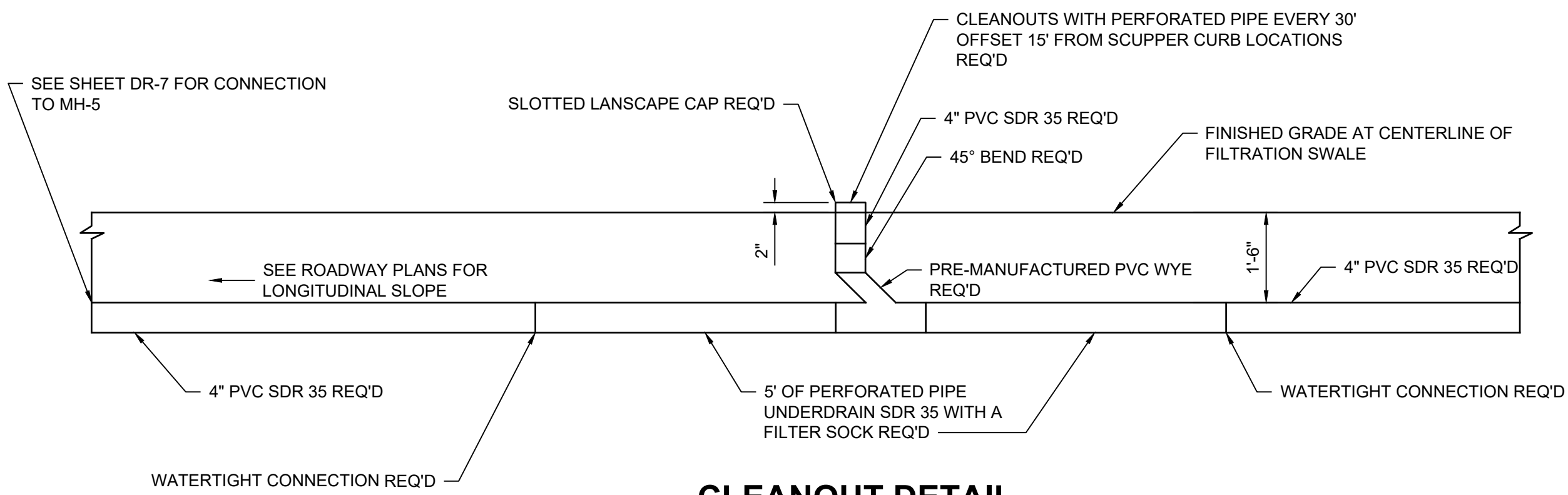
SECTION C - PROFILE OF TYPE A CURB WITH SCUPPER TURNOUT

STA: 66+94.15 TO 82+53.50
SCALE: 1" = 2'



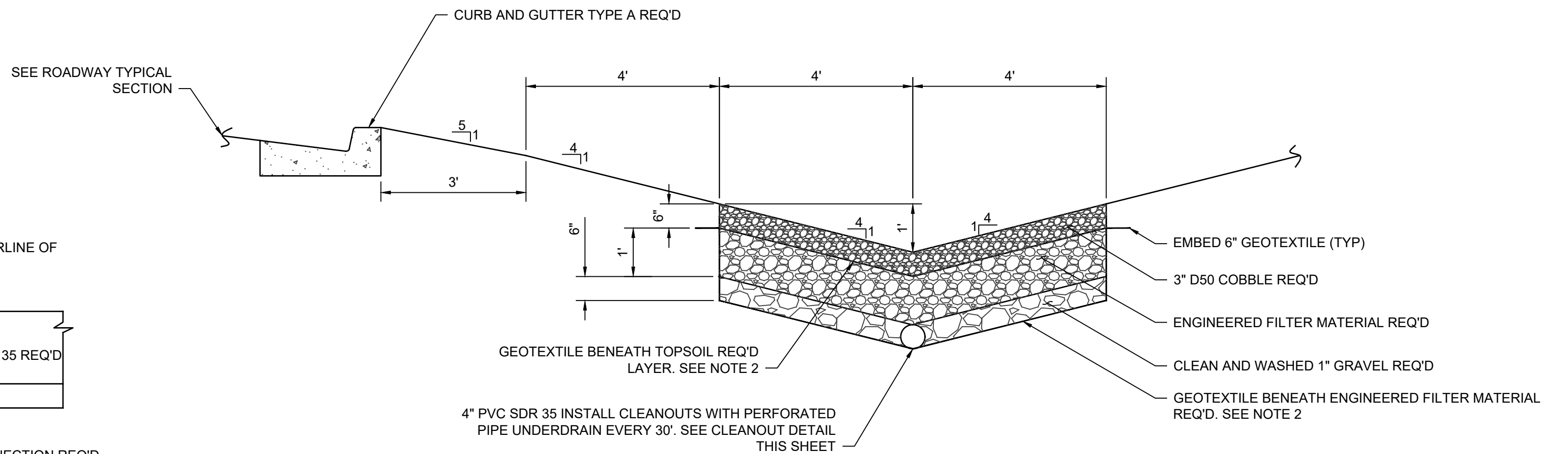
SECTION A - TYPICAL SECTION FILTRATION SWALE AT SCUPPER TURNOUT (UNDEVELOPED)

SCALE: 1" = 2'



CLEANOUT DETAIL

STA: 66+94.15 TO 82+53.50
SCALE: 1" = 2'



SECTION B - TYPICAL SECTION FILTRATION SWALE WITH TYPE A CURB (UNDEVELOPED)

SCALE: 1" = 2'

SHEET NO: **DD-2**

REVISION BLOCK: 10/24/2019 ADDENDUM 2

DESIGNED: CK
DRAFTED: LMR
CHECKED: CK



756 E Winchester St.
Suite 400
Salt Lake City,
UT 84107
801-904-4000

1400 NORTH AT 600 WEST
TRAFFIC SIGNAL PROJECT
UNDEVELOPED FILTRATION SWALE DETAIL SHEET

LOGAN CITY ENGINEERING
290 NORTH 100 WEST
LOGAN, UTAH 84321

